

MashUp n' Hei App

user guide



Light Mode / Dark Mode

Can be toggled using the sun/moon icon.

By default the app will match the user's current phone profile settings



Login Page

Features:

- Language Select
- Log In
- Create a new user. (Register)
- Enter as a quest
- *What's the difference**

*An informative user pop-up explaining the difference between a user entering as a quest vs registering.

Change Language:



Email Address

Password

Log In

Create a new user

Enter as a guest

What's the difference?

What's the difference?

If you register, you will be able to sync your progress if you log out of the app or log in on a different device.

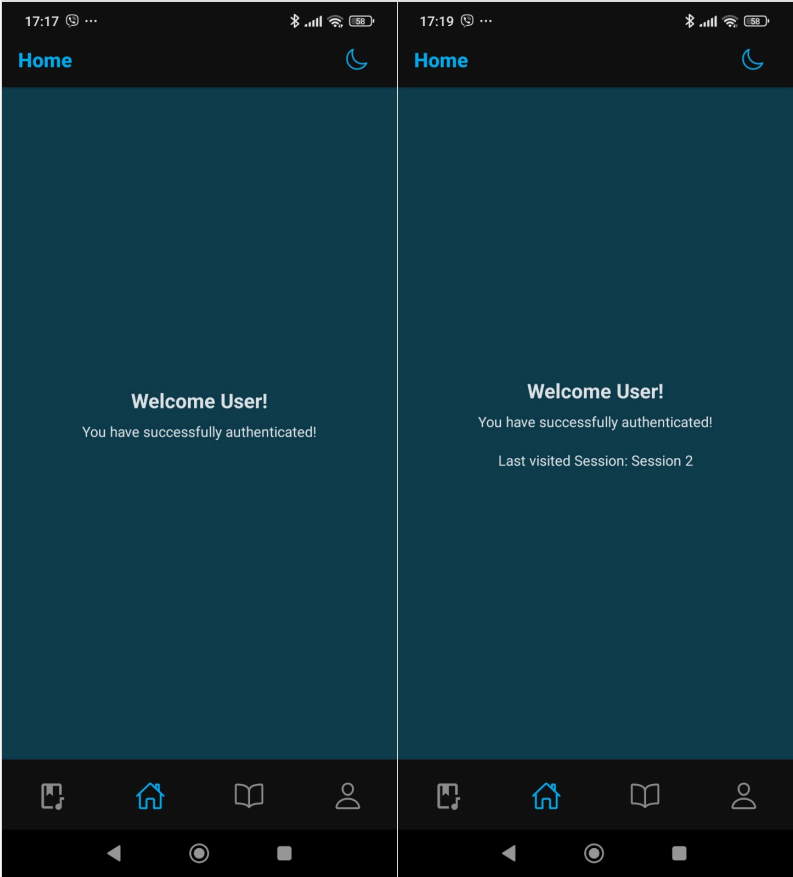
If you enter as a Guest, you will lose all your progress and inputs if you log out or update the app. You won't be able to access your progress across devices.

Don't worry, closing the app doesn't log you out. You can only manually do that.

The app is still in testing, so if you want your data and progress to be saved, please consider using register option since the app might get frequent updates.

Disclaimer: Your data is in no way associated with your email. Only your progress is.

OK

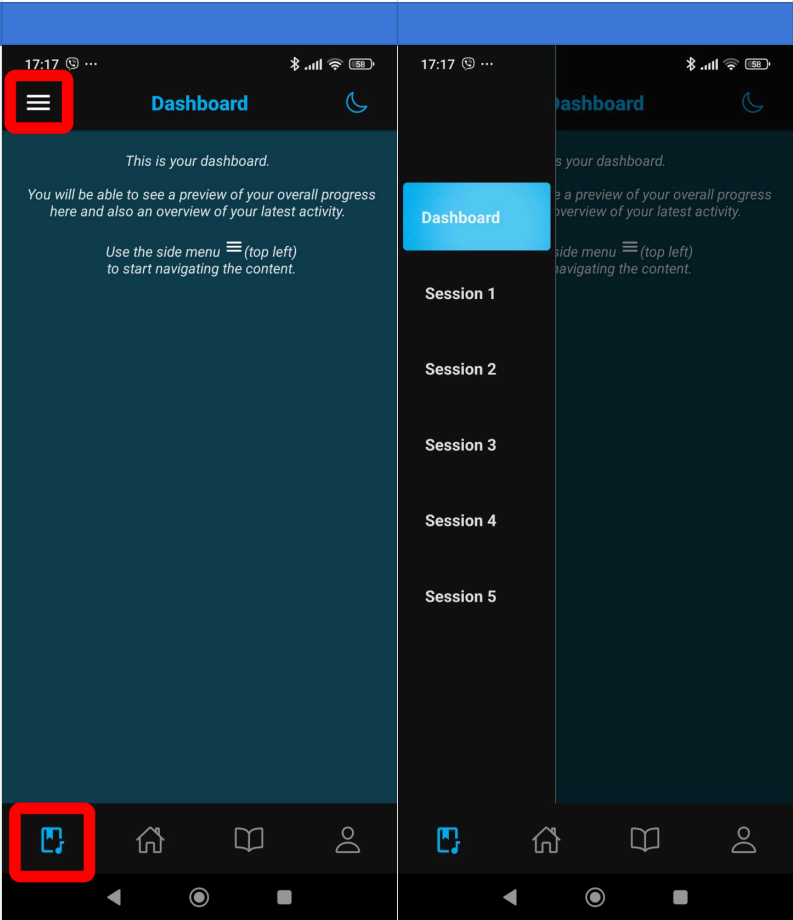


Home Page

Features:

This is the default landing page the user will see everytime they launch the app.
The first time, this screen will only display the general welcoming message.

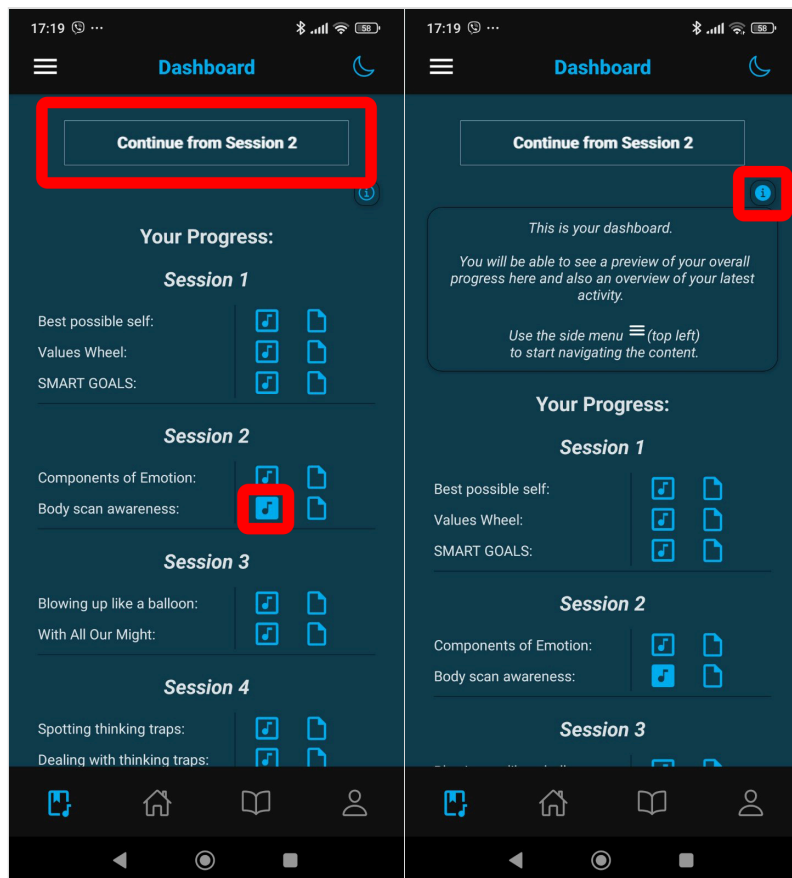
Subsequently the Home Page will provide other usefull information based on app usage and activity.



DashBoard (pt1)

Features:

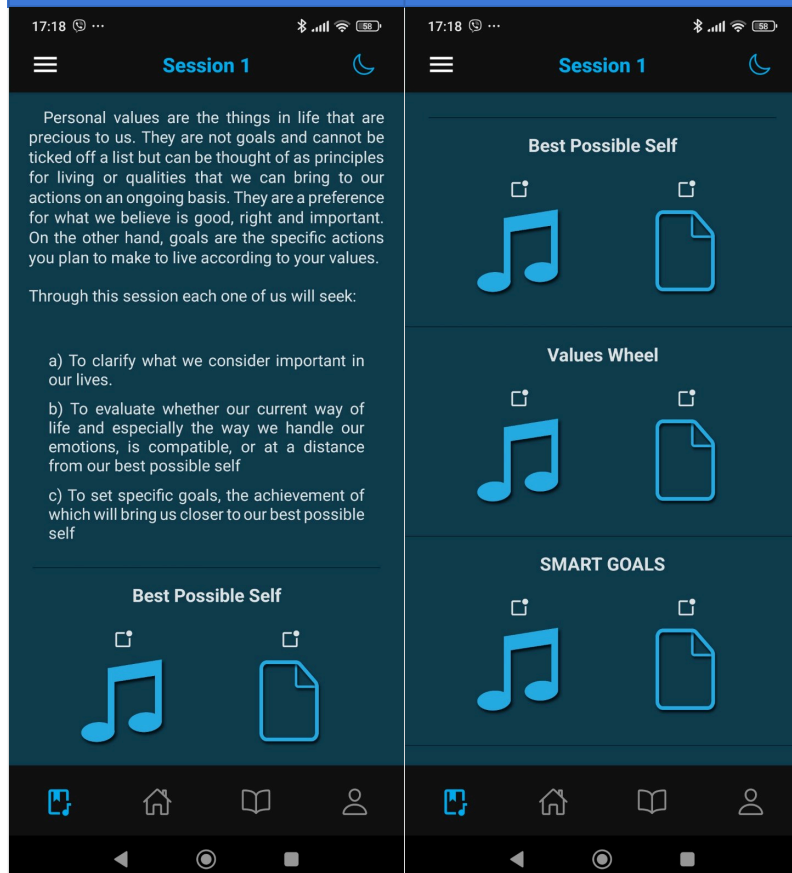
The first time this screen will display the general information and instruct the user to use the burger menu to access the Sessions and activities.



DashBoard (pt2)

Subsequently, the dashboard will provide an overview of all available sessions and activities as well as an indication of how many have been marked as completed and how many are pending.

Through the dashboard a user can also navigate using the "continue" button to the session they were at before closing the app.

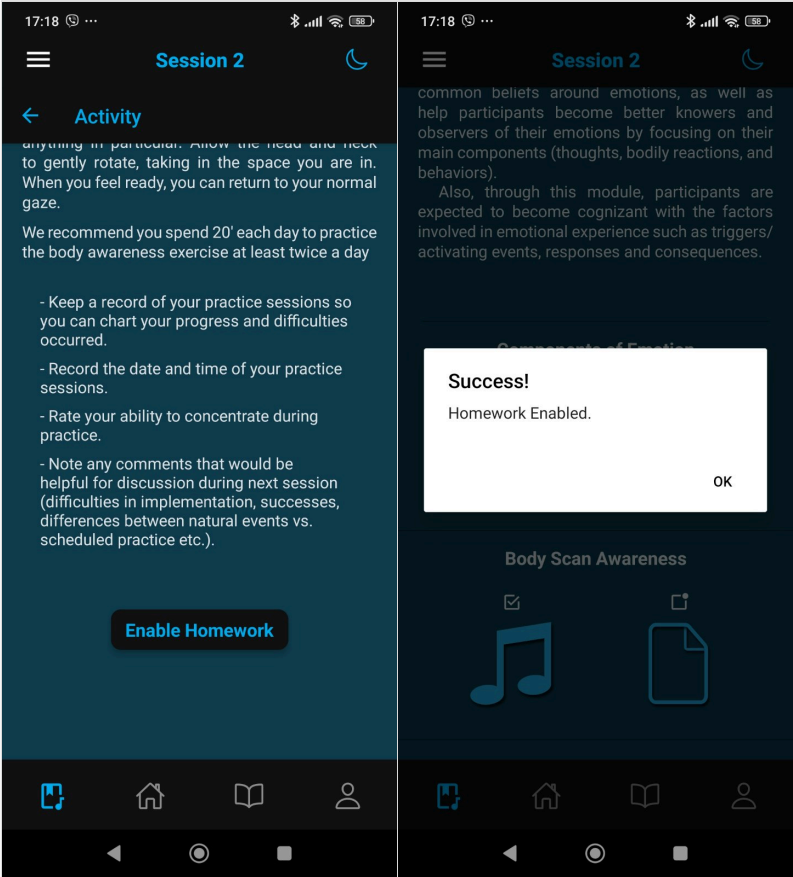


Choosing a Session

Features:

Usually, sessions are comprised of an introduction, a summary and various exercises. If a user is following the music modal they can do the version of the exercise with the musical icon. If they are instead following the classic modal they can do the paper icon version.

User's can do both if they wish to do so.

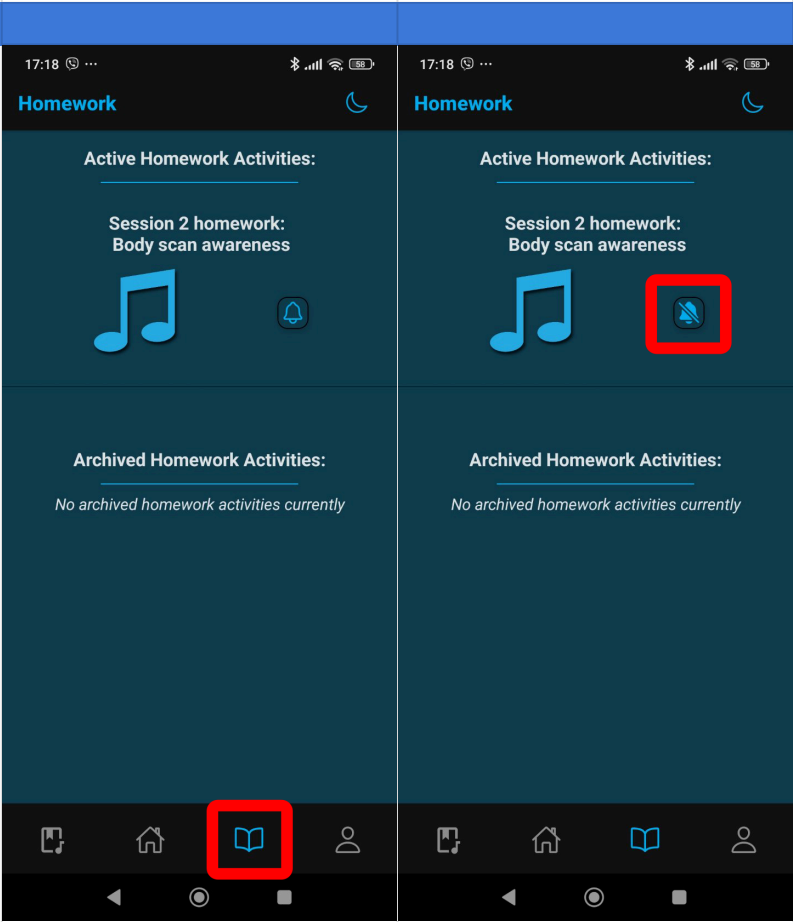


Enabling Homework

Features:

With the exception of session 1, all other sessions have activities that also have homework associated with them that the user can activate at the end of the activity.

Doing so, will add an activity in the homework tab and start a notification campaign for 7 days. During this time, users will receive a notification at a fixed time per day reminding them to practice the activity (homework).



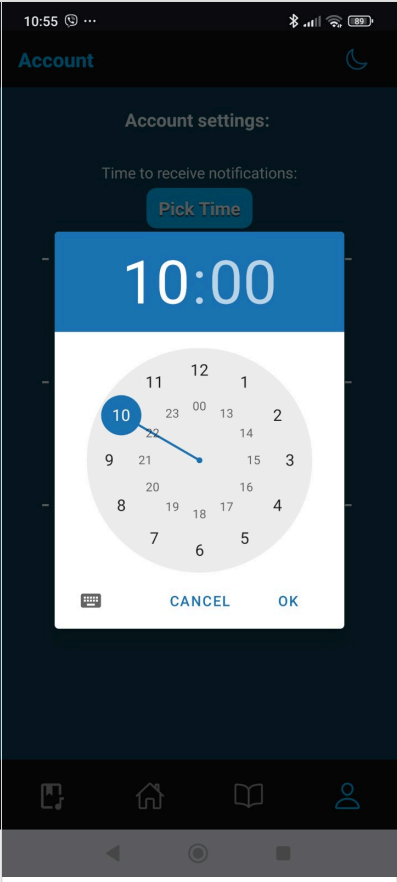
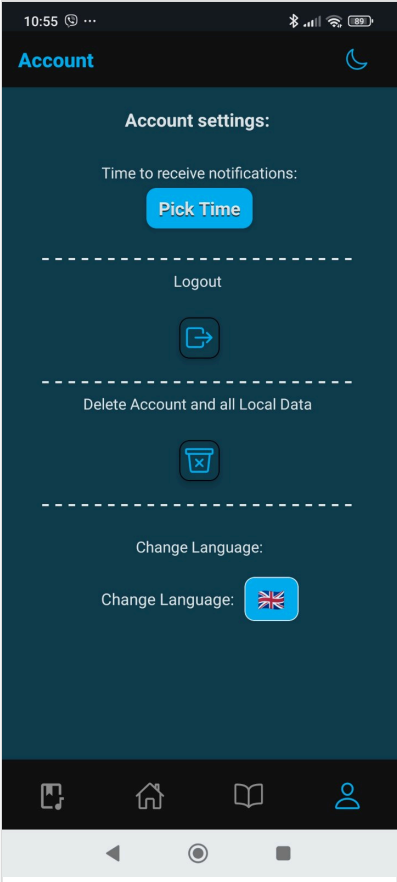
Homework Tab

Features:

Active Homework Activities:
In the homework tab, user's can see which activities they have as active Homeworks..

Archived Homework Activities:
..and past Homeworks that have run their course and have been completed.

Users can enable/disable notifications for any active activities here.



Account Settings Tab

Features:

- Change Notifications Time
- Log Out
- Delete Account and all local Data
- Language Select